

PLASTERING SCREWS

Bugle Head YZ

•SDS

GWF-SPS062510 | 6-20x25 BX1000
 GWF-SPS063210 | 6-20x32 BX1000
 GWF-SPS064510 | 6-20x45 BX1000



•Needle Point Coarse

GWF-SCC072510 | 7-9x25 BX1000
 GWF-SCC073210 | 7-9x32 BX1000



•Needle Point Fine

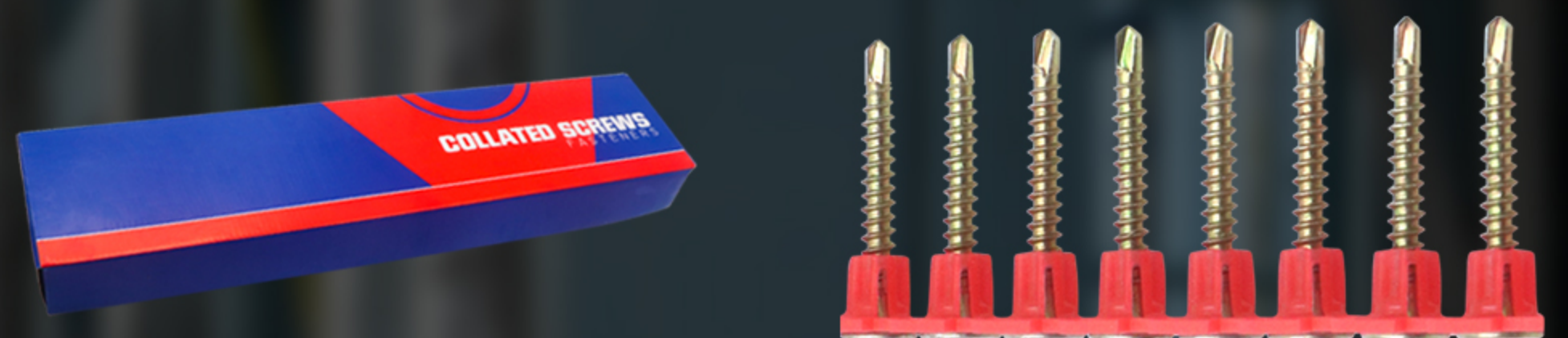
GWF-SCF062510 | 6-18x25 BX1000
 GWF-SCF063210 | 6-18x32 BX1000
 GWF-SCF064110 | 6-18x41 BX1000



Bugle Head YZ Collated

•SDS

GWF-SPC062510-446 | 6-20x25 BX1000
 GWF-SPC063210-448 | 6-20x32 BX1000
 GWF-SPC064110-450 | 6-20x41 BX1000



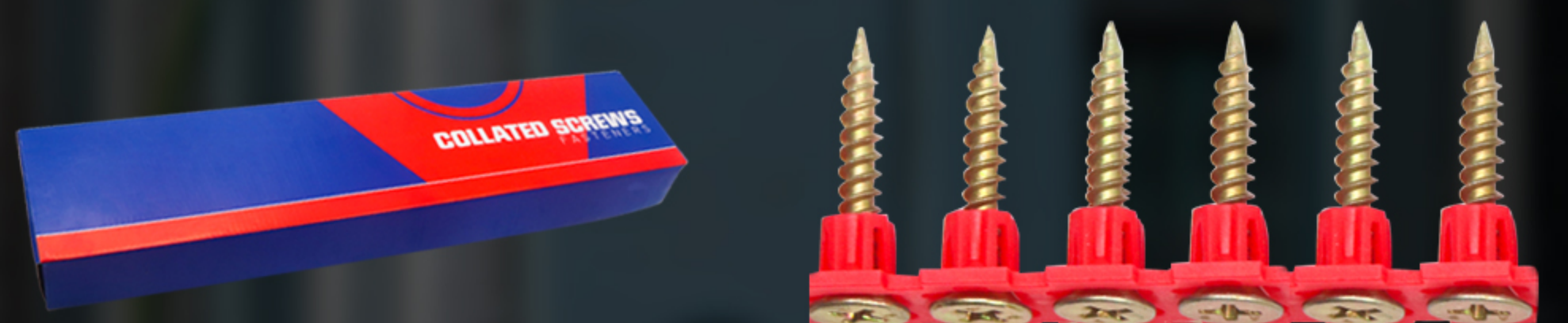
•Needle Point Coarse

CARD-HWF-SCC625-153 | 6-9x25 BX1000
 CARD-HWF-SCC632-155 | 6-9x32 BX1000
 CARD-HWF-SCC641-157 | 6-9x41 BX1000



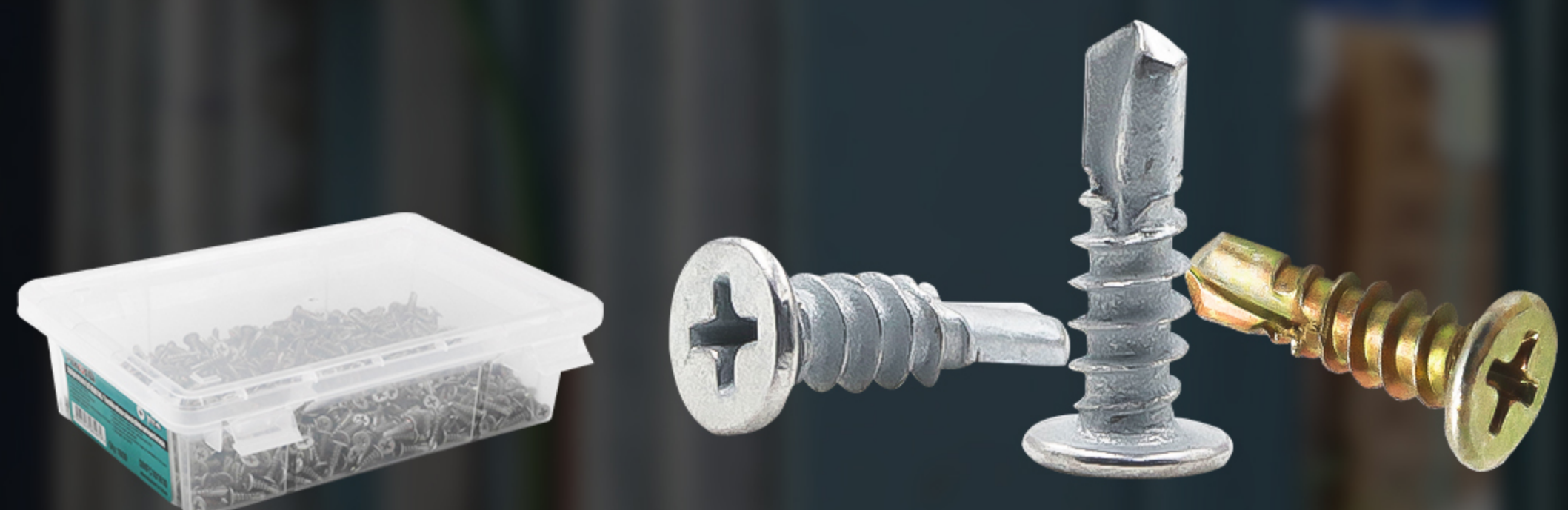
•Needle Point Fine

CARD-HWF-SCF625-152 | 6-18x25 BX1000
 CARD-HWF-SCF632-154 | 6-18x32 BX1000
 CARD-HWF-SCF641-156 | 6-18x41 BX1000



Micro Flat Head

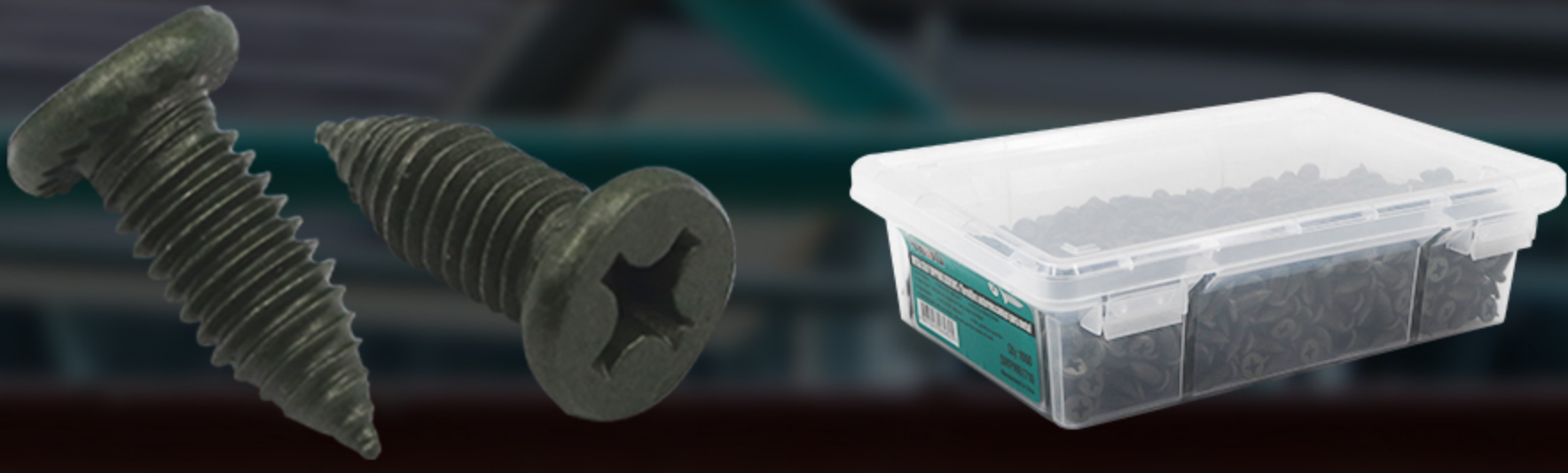
GWF-SMF101610 | 10-16x16 BX1000
 GWF-SMFC101610 | 10-16x16 BX1000



LGS FRAMING SCREWS

• Self Drilling PH3 Class 3 Green

GWF-SMPM61710 | M6-24x17 BX1000



• Self Drilling Hex Head Class 4

GWF-SMSBX1220 | 12-14x20 BX1000
 GWF-SMSBX1235100 | 12-14x35 BX1000
 GWF-SMSUBX122420100 | 12-24x20 BX1000



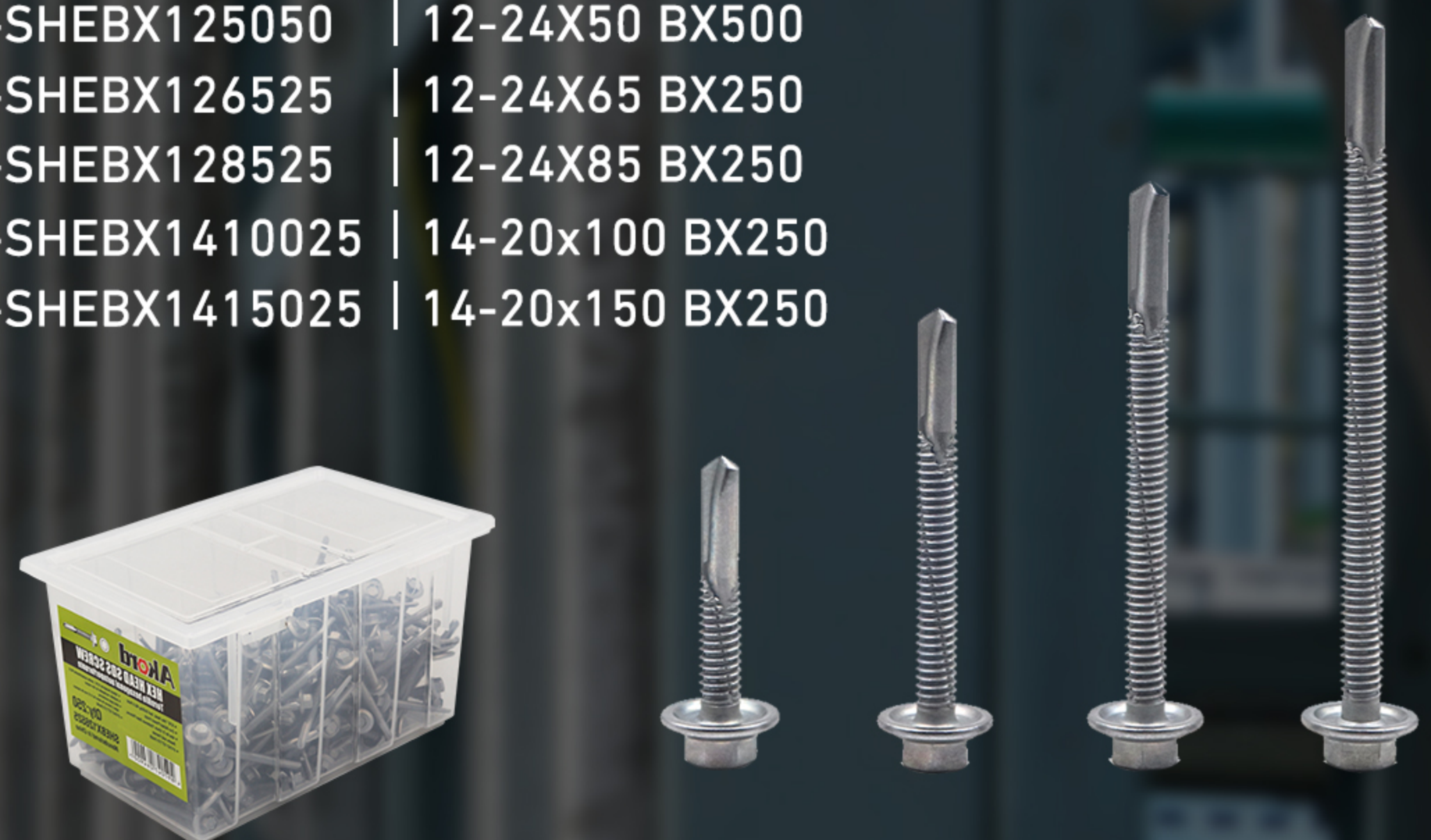
• Self Drilling Flat Head SDS C4

GWF-SFSBX1016100 | 10-24x16 Box1000



• Self Drilling No.5 Hex Head ZnNi

GWF-SHEBX123050 | 12-24X30 BX500
 GWF-SHEBX125050 | 12-24X50 BX500
 GWF-SHEBX126525 | 12-24X65 BX250
 GWF-SHEBX128525 | 12-24X85 BX250
 GWF-SHEBX1410025 | 14-20x100 BX250
 GWF-SHEBX1415025 | 14-20x150 BX250



HEBEL SCREWS

• T17 Hex Head Dacrome

GWF-STDBX1235100 | 12-11x35 BX1000
 GWF-STDBX146550 | 14-10x65 BX500
 GWF-STDBX149050 | 14-10x90 BX500
 GWF-STDBX1415025 | 14-10x150 BX250



CHIPBOARD SCREWS

• Self Embedding YZ

GWF-SCS082510 | 8-9x25 BX1000
 GWF-SCS082810 | 8-9x28 BX1000
 GWF-SCS083210 | 8-9x32 BX1000
 GWF-SCS084010 | 8-9x40 BX1000
 GWF-SCS084510 | 8-9x45 BX1000
 GWF-SCS085010 | 8-9x50 BX1000

